

135 Wellington Street Bondi Beach NSW

2 1

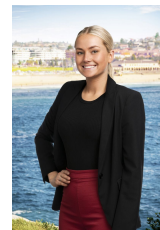
Boasting impressive proportions and a vast rear garden with entertainer's deck, this character-filled semi offers a rare opportunity in sought-after Bondi Beach, with its famed coastal lifestyle at your doorstep. A level walk to the sand and surf, with the stunning harbour playground in easy reach, it provides a well-connected base from which to enjoy the best of the East.

Nestled behind a leafy garden and sheltered porch, the home showcases soaring ceilings and charming period accents throughout. Two oversized bedrooms feature b/in robes and ceiling fans, while an expansive living space with ample room for dining flows seamlessly into the sunlit kitchen. Offering an ideal setting for alfresco summer BBQs and relaxing in the sun, the huge entertainers deck steps

Type : Semi Detached
Price : Auction | Jason Taylor 0412 757 470
View : <https://www.rwbb.com.au/sale/nsw/eastern-suburbs/bondi-beach/residential/semi-detached/8288739>

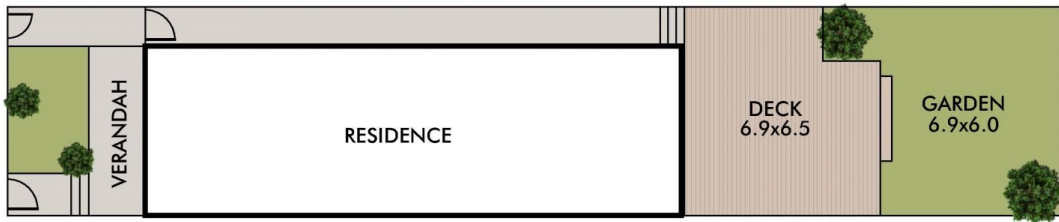
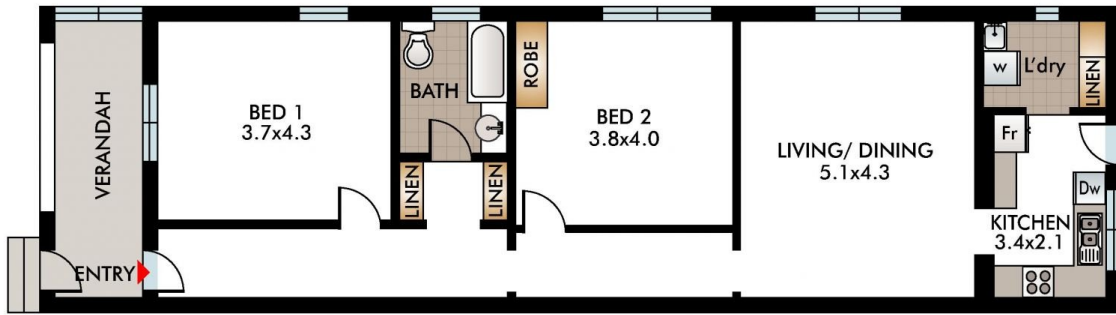


Jason Taylor
02 8362 4000



Alena Sachr
02 8362 4000

[For full version visit the website](https://www.rwbb.com.au)



SITE PLAN (not to scale)

135 Wellington Street, Bondi Beach

This diagram is for illustrative purpose only. All reasonable care has been taken in the preparation, but no warranty is given to the accuracy of the information. This document does not constitute any part of any offer or contract. Dimensions shown are approximate only. Prospective purchasers must rely on their own enquiries.

