



Bondi Beach

2 1 1

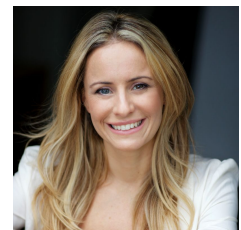
In a peaceful leafy pocket moments to Australia's most iconic beach, this light and airy two-bedroom apartment captures tranquil treetop outlooks from its elevated setting in Pacific Gardens, a c1975 complex of four low-rise buildings tucked away in a tree lined one-way avenue just 200m to Hall Street village cafes, dining, shopping and 600m level walk to the sand and surf.

With a sunny NE aspect and alfresco balcony, the apartment is immediately liveable while offering scope for a contemporary makeover. Wide windows amplify the sense of space in the generous layout with open-plan living and dining areas, modern kitchen, 2 large bedrooms, bathroom, laundry and easy access to an oversized lock-up garage with room for a car, motorbike and potential mezzanine storage.

View : <https://www.rwbb.com.au/sale/nsw/eastern-suburbs/bondi-beach/residential/apartment/6938083>



Ian Wallace
02 8362 4000



Immik Kerr
02 8362 4000



BONDI BEACH



*PLANS SHOWN ONLY INDICATIVE OF LAYOUT. DIMENSIONS ARE APPROXIMATE.
Measurements are approximate and not to scale. The vendor, agency and supplier will accept no liability for its accuracy. Interested parties are advised to make their own independent enquiries.