



4/164 Wellington Street Bondi Beach NSW

2 1

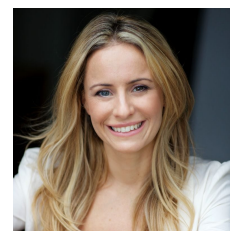
Classic Art Deco character, smart modern design and pleasant leafy outlooks are combined to great effect in this light-filled apartment that's situated in a small older style building of six. Quietly set in a tree-lined street, it is freshly presented throughout and enjoys a top lifestyle position that's within strolling distance down to the surf, sand and Bondi's vibrant beachside café scene. This boutique setting is also tucked away footsteps to city bus connections and just a few minutes to Westfield Bondi Junction, trains and Rose Bay village.

- Immaculate interiors with beautifully preserved period features
- Smartly updated throughout with good - quality finishes.
- Well-proportioned layout with a light-filled open living/dining space
- High decorative ceilings, lime-washed timber flooring and

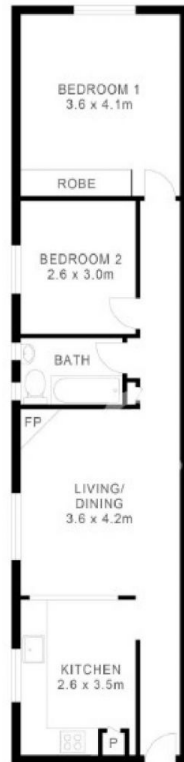
View : <https://www.rwbb.com.au/sale/nsw/eastern-suburbs/bondi-beach/residential/apartment/6752685>



Ian Wallace
02 8362 4000



Immik Kerr
02 8362 4000



Scale is correct, indicative only. Dimensions are approximate. All information contained herein is gathered from sources not verified by our estate. However, we cannot guarantee its accuracy and interested parties should rely on their own inspection.

4/164 Wellington Street, Bondi