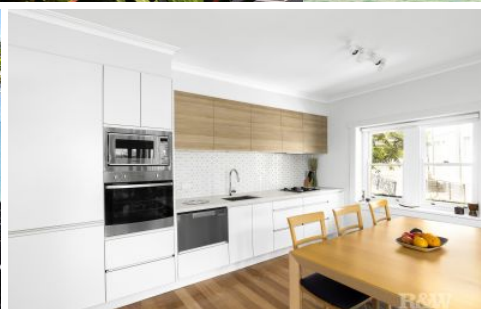




Actual view



5/778 New South Head Road Rose Bay NSW

2 1 2

A sumptuous harbour-view sanctuary with three outdoor areas including a balcony with direct vista over the waters of Rose Bay to the CBD skyline, serene harbourside living awaits at this graceful 2-bedroom apartment. Set in the Art Deco "San Romolo" building in an elevated position above Rose Bay, it features a house-like ambience and elegant quiet setting, with private entry, sandstone-walled courtyard, easy-access parking, and exclusive-use lawn/garden.

Blessed with those enchanting views, a sunny living/dining area opens to the balcony, perfect for al fresco dining, with the adjoining kitchen offering an immaculate space with gas cooking. The main bedroom has b/in robes and opens to the courtyard, with 2nd entry and near-level access to parking, while the 2nd bedroom is a tranquil space, also with b/ins. With an impeccable modern bathroom with

View : <https://www.rwbb.com.au/sale/nsw/eastern-suburbs/rose-bay/residential/unit/6693879>

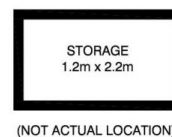
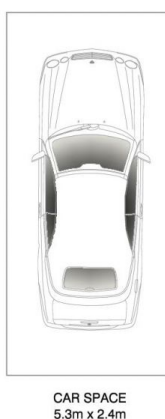
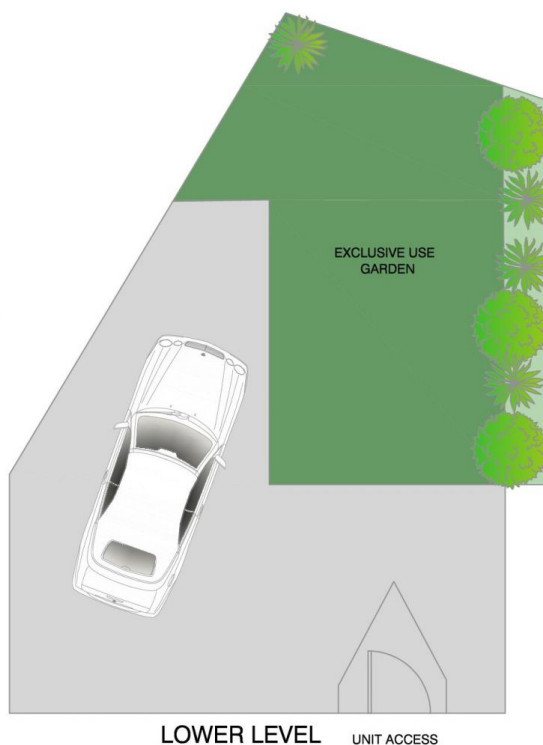
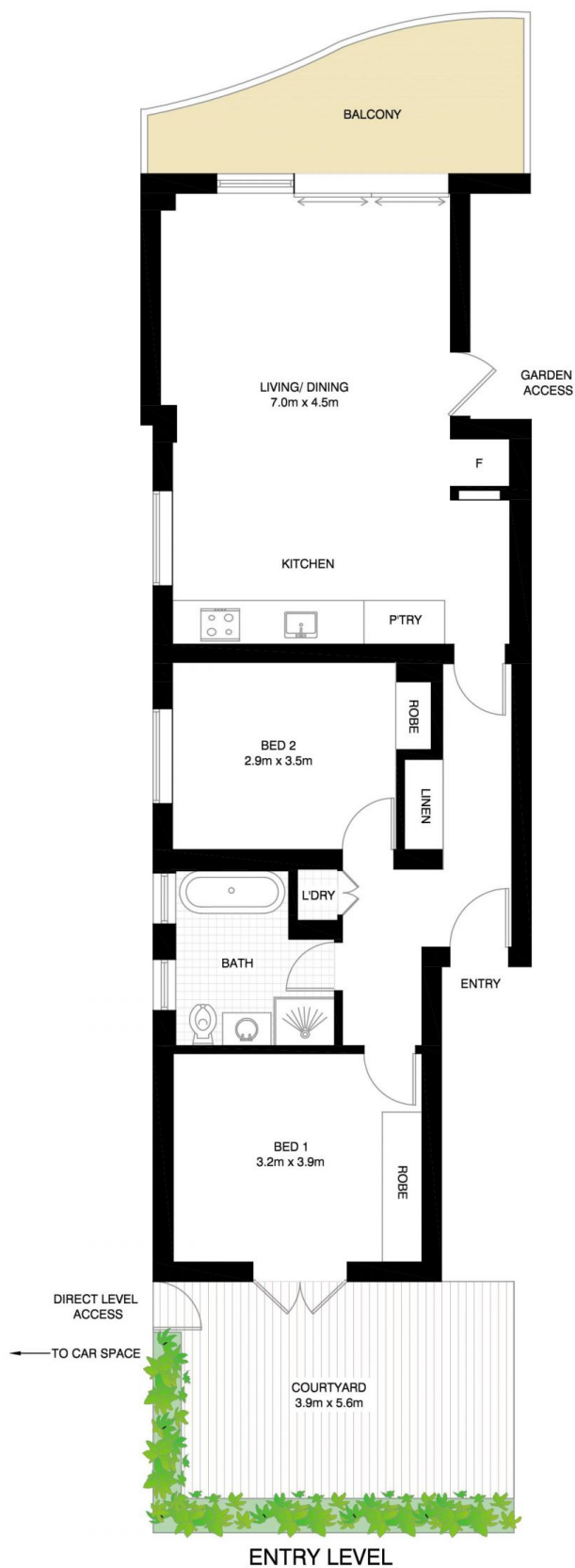


Ian Wallace
02 8362 4000



R&W

Bondi Beach



ROSE BAY

5/778 NEW SOUTH ROAD



*PLANS SHOWN ONLY INDICATIVE OF LAYOUT. DIMENSIONS ARE APPROXIMATE.
Measurements are approximate and not to scale. The vendor, agency and supplier will accept no liability for its accuracy. Interested parties are advised to make their own independent enquiries.