

8/376 Edgecliff Road Woollahra NSW

2 **1** **1**

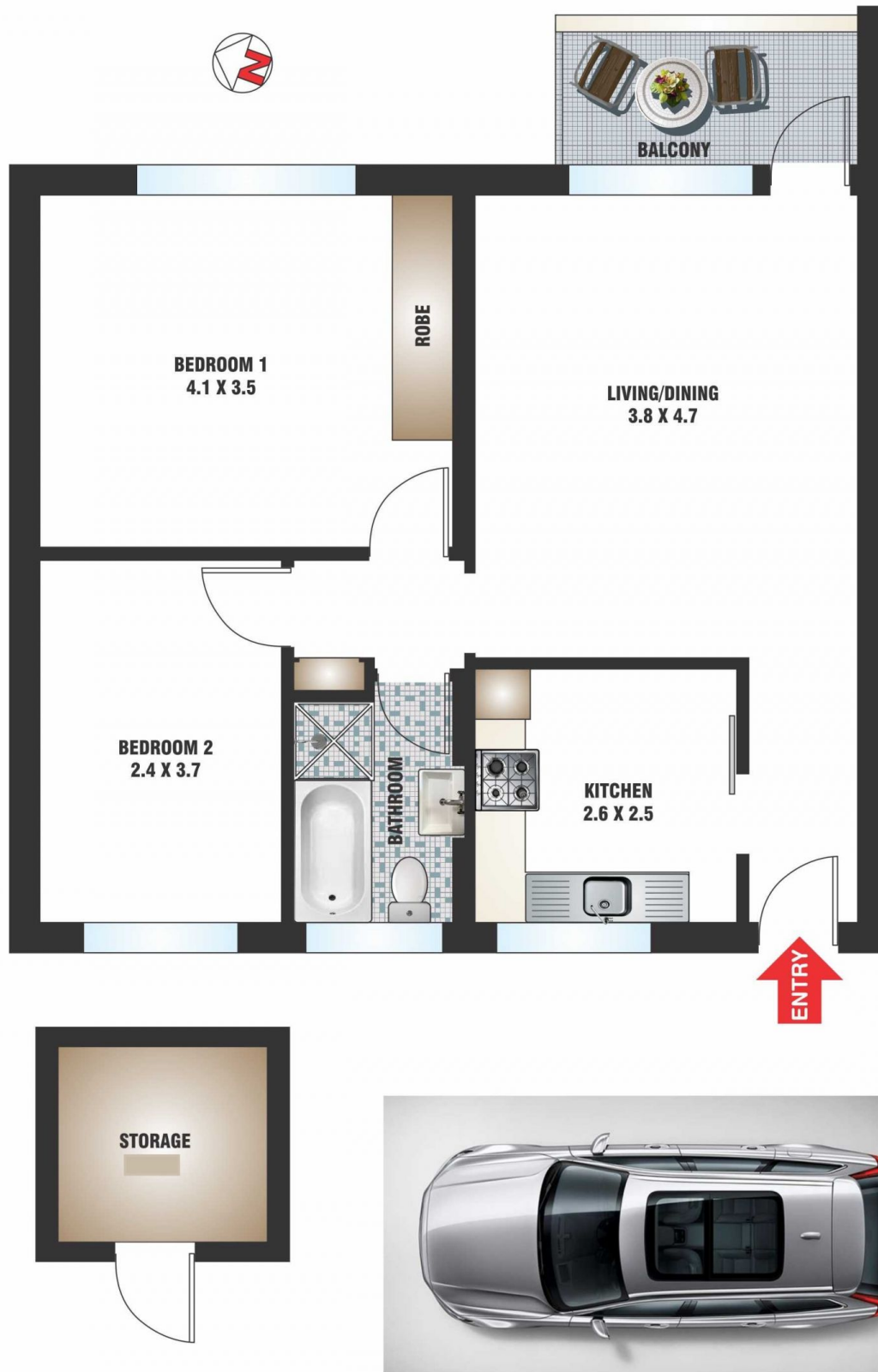
Bathed in sun and exuding a wonderfully serene atmosphere befitting the tranquil environs of Woollahra, this 2-bedroom apartment is a gorgeous home in a distinguished area. North-facing and with a lush leafy outlook, it is positioned in a terrific location, a stroll to the Queens St village and minutes to both Edgecliff and Bondi Junction, with private undercover parking a superbly convenient inclusion.

Set in an elevated position with a light-filled aspect, the home features a spacious living area with wood-finish floors and high ceilings opening to a sun-soaked private balcony, a fantastic spot for breakfast or a morning coffee. The large eat-in gas kitchen is a generous space while the main bedroom is expansive, with b/in robes and far-reaching district views. The 2nd bedroom meanwhile is quiet and private, with the adjacent bathroom featuring full

View : <https://www.rwbb.com.au/sale/nsw/eastern-suburbs/woollahra/residential/apartment/5932264>



Ian Wallace
02 8362 4000



FLOOR PLAN BY BORTEX PTY LTD PH: 0414 922 679

"The information contained herein has been provided by our Principal and third parties, which we merely pass on without any representation or warranty given, intended or implied by us as to its correctness and with no liability accepted by us in this regard. You must rely on your own inquiries as to its accuracy or otherwise."