



**1/15 William Street Rose Bay NSW**

3 🏠 2 🚗 1 🚗

Architecturally designed for spacious living, this 2-level townhouse is one of 3 residences in a boutique complex set in a tree-lined avenue at the border of Rose Bay and North Bondi. Facing north with expansive living space, it offers the scale and feel of a house complemented by an outdoor entertaining area and large expanses of glass capturing sunshine and natural light.

**View :** <https://www.rwbb.com.au/sale/nsw/eastern-suburbs/rose-bay/residential/apartment/5932140>

The entry level includes a large living area, dining zone seating 8 people, spacious covered alfresco entertaining terrace, open-plan gas kitchen, powder room and laundry. Upstairs are the main bedroom (with built-ins, ensuite and balcony), 2 more bedrooms (both with built-ins, one with balcony) and main bathroom with bath and separate shower.

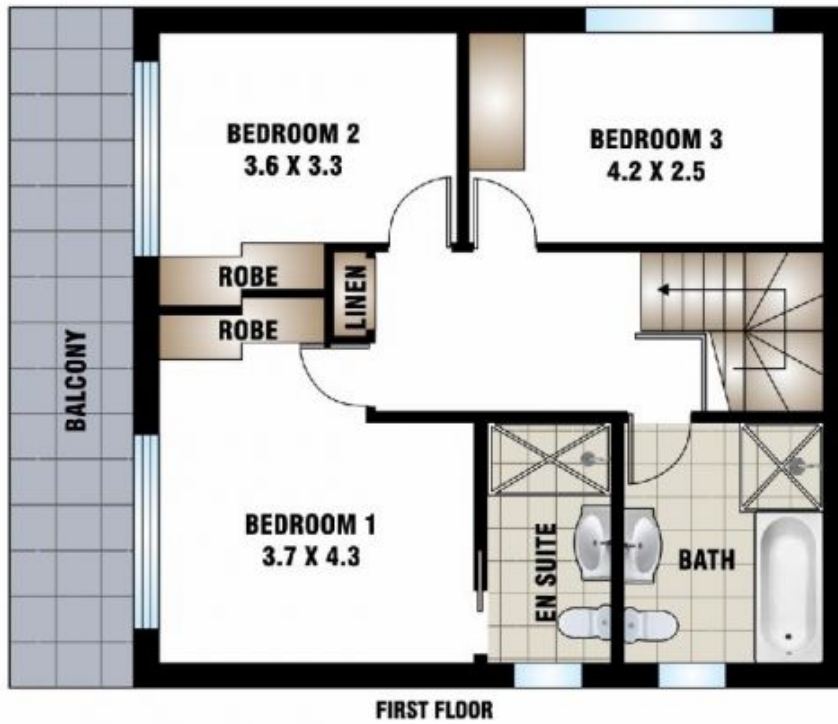


**Ian Wallace**  
02 8362 4000



**Jason Taylor**  
02 8362 4000

Additional features include high ceilings, quality carpet,



**UNDERCOVER  
 CAR SPACE  
 2.5 X 6.5**

FLOOR PLAN BY BORTEX PTY LTD PH: 0414 922 679

"The information contained herein has been provided by our Principal and third parties, which we merely pass on without any representation or warranty given, intended or implied by us as to its correctness and with no liability accepted by us in this regard. You must rely on your own inquiries as to its accuracy or otherwise."