

**11/85 O'Sullivan Road Rose Bay NSW**

**2 1 1**

Peacefully positioned at the rear top floor of 'Knowle Court', a classic Art Deco building standing opposite the fairways of Woollahra Golf Course, this bright and airy apartment features a generous layout, sunny easterly aspect, high ceilings, wide windows, private leafy outlook and a car space. One of 12 apartments in the well maintained block, it has an entry hall, 2 double bedrooms (both with built-ins), modern bathroom, concealed laundry (with washtub and storage), spacious living/dining area and open-plan Caesarstone gas kitchen with stainless steel appliances including a dishwasher. Offering an enviable walk-to-everywhere lifestyle in a premier harbourside enclave, the apartment is footsteps to Plumer Rd village shops, a short level stroll to city buses and Rose Bay ferry wharf and minutes to Bondi Beach.

**View :** <https://www.rwbb.com.au/sale/nsw/eastern-suburbs/rose-bay/residential/apartment/5932125>

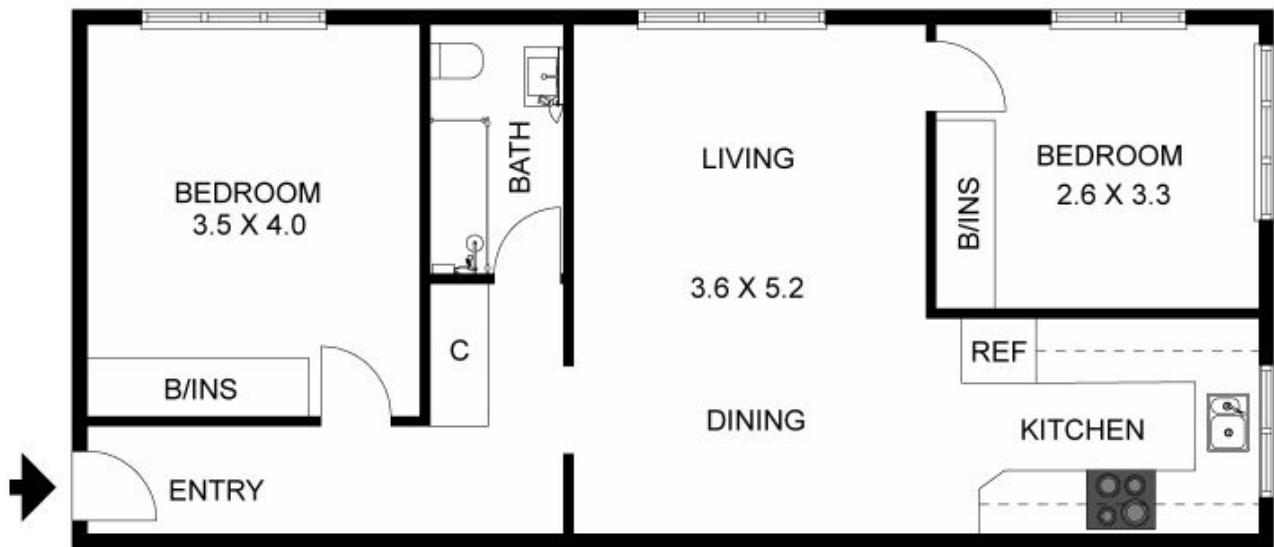


**Jason Taylor**  
**02 8362 4000**



**Ian Wallace**  
**02 8362 4000**

Property Features;



11/85 O'SULLIVAN ROAD, ROSE BAY

The floor plan is not to scale; measurements are indicative and in metres. Exterior elements are not in position.  
Plans should not be relied on. Interested parties should make and rely on their own enquiries.



## 11/85 O'SULLIVAN ROAD, ROSE BAY

The floor plan is not to scale; measurements are indicative and in metres. All features included in this 3D plan are for inspiration purposes only.  
This is not an exact replica of the property or the position of exterior elements. Plans should not be relied on. Interested parties should make and rely on their own enquiries.