



1301/310-330 Oxford Street Bondi Junction NSW

4 3 2

STUNNING OVERSIZED PENTHOUSE 4 BEDROOMS, 3 BATHS, 2 CAR SPACES WITH VIEWS

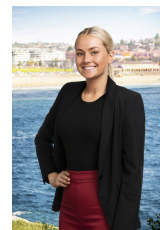
This stunning oversized 4 bedroom, 3.5 bathroom, 2 car space penthouse apartment boasts 289sqm in luxurious living in the sought after Bondi Junction building, 'The Forum'.

Featuring stunning district views, ultra modern gourmet kitchen, four double bedrooms including master suite with bath and walk in robe, open plan living, dining and kitchen that flows onto the large balcony and common roof top. Perfectly positioned in the heart of Bondi Junction, popular cafes, gyms, restaurants and public transport links are right on its door step.

View : <https://www.rwbb.com.au/lease/nsw/eastern-suburbs/bondi-junction/residential/apartment/5932107>



Estelle Georgiakakis
02 8362 4000



Alena Sachr
02 8362 4000

Would you like to attend our inspection?